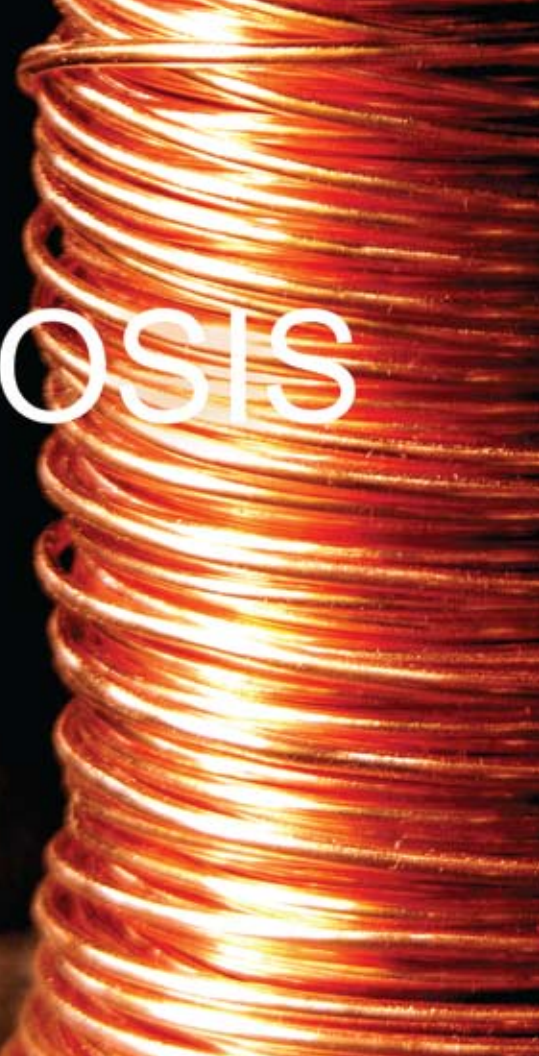


METAMORPHOSIS EVOLUTION



METAMORPHOSIS EVOLUTION

curators' statements

A select group of primarily local Sea to Sky Corridor artists have sequestered their creative thoughts over the past year as they pondered their relationships with mining and mined materials. They have come together to present their realizations at Metamorphosis Evolution. The exhibit's title is its theme, which is defined as the process of change and transformation. A perfect example of this is the Britannia Mine itself, evolving from her industrial origins as a great copper mine providing the mined product for the building of cities and new technologies to becoming a source of inspiration and innovation showcasing artistic and educational pursuits.

This is the first art exhibit at the BC Museum of Mining. Selection of the artists was challenging, as the Sea to Sky Corridor was recently determined to have the second highest artistic population in a community of fifty thousand or less in all of Canada. Our Corridor is also in a renaissance as our industrial heritage is being carefully preserved; in contrast, unprecedented developer interest is transforming our vernacular landscape. Finally our world renowned First Nation people are continuing to respond to the interest of many from around the globe. A perfect starting place for the theme of metamorphosis evolution.

This exhibit presents a unique multi-disciplinary cross-section of contemporary art by a diverse group of creators enthusiastically honouring mined product within the context of the theme Metamorphosis Evolution. Works of exceptional strength include Painting, Jewellery, First Nation Art, Ceramics, Installation, Sculpture, Photography, Textile, Wood, Metal and Architectural Art. Participation fully engaged the artists, as the seed for each of their ideas began with mining in general, evolved through the Britannia Copper Mine and onto their personal relationships with mined product.

Art is the barometer that gauges our evolution as a society. It is my hope that this exhibit will be considered as a vibrant barometer of the evolution of art and creativity in our community.

Krisztina Egyed, Guest Curator

From the view of an Executive Director, this exhibit is important for two reasons: it has an artistic message about the Earth and this message is made even more powerful through the unique assembly of artists and their pieces; second the exhibit is a symbol of how the Museum wishes to go forward with designing relevant programs and services to the communities we serve.

Kirstin Clausen, Executive Director, B.C. Museum of Mining

It is in the nature of humans to dig, explore and find a use for their discoveries. Mining, in one form or another, has been happening for thousands of years, be it for flints to fashion into spearheads, or copper to use to produce a myriad of 21st century objects. Indeed mining has played a huge part in the growth of the human race – every manmade object is made from materials that have either been grown, or mined from the Earth.

The art pieces in Metamorphosis Evolution all have mining at their heart. You will see copper, iron, clay, even paint pigments – all natural, all mined products. But take a step further and consider the screws and nails, the paint on the bases, the photographic paper, the concrete floor, the metal artifacts nearby. All are here because somebody, somewhere has mined the natural 'ingredients' that makes them.

So why has a mining museum done an art show? The reason – to go beyond the world of 'function', and into the world of 'form'. We have taken the historical setting of the Britannia Mine, a mine that evolved from our modern need for metal, and blended it with the world of personal expression and style. So please explore and enjoy this exhibit, and let your mind wander over two very different topics that both play a part in what makes us human!

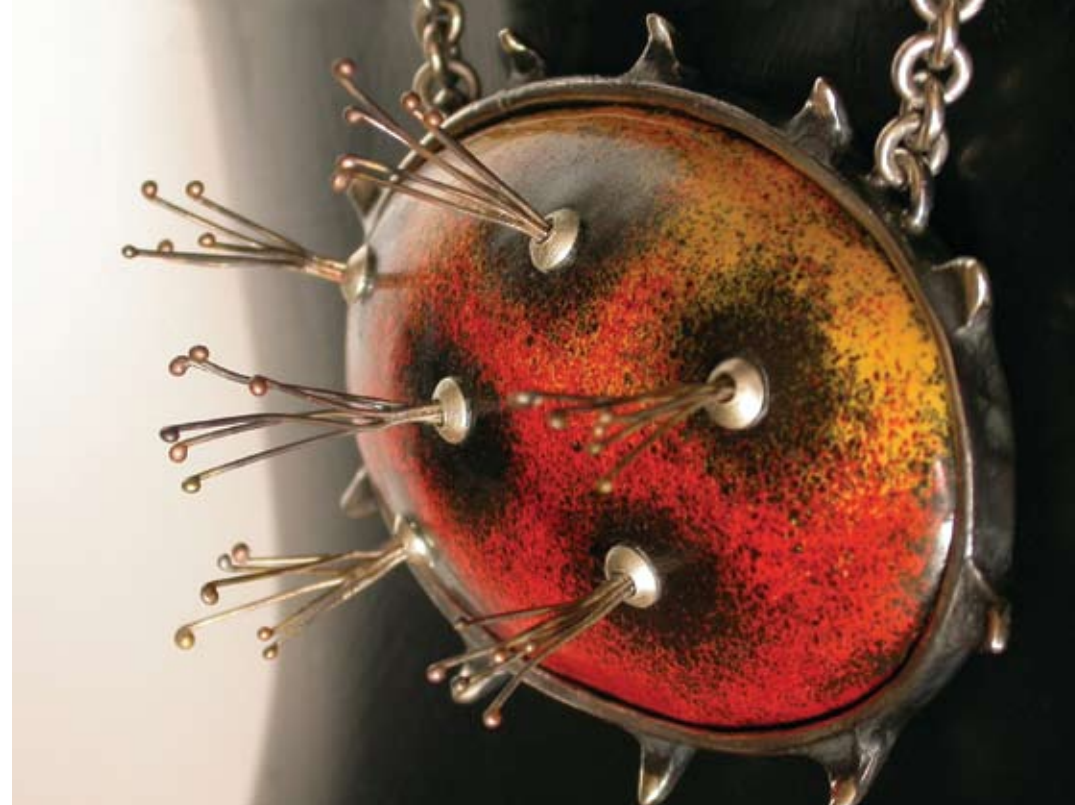
Diane Mitchell, Curator, B.C. Museum of Mining

Douglas Senft
Uncertain Prospects 4
bronze
23" x 45" x 61"





Susan Remnant
Seed to Seed
pendants: silver, copper, glass enamel
2.5" x 3.5"





Linda Wagner
In the Same Vein
oil on canvas
10' x 4'



Marek Normon
Evolution of Speed
silver copper alloy
18" length



Douglas Senft
Uncertain Prospects 3
steel
18¼”h. x 41” x 48½”

Orly Ashkenazy
Time to Rise
sterling silver bracelet
2½” x 2½” x 2½”

Change
silver, copper & syn. rubies
5” x 2½” x 2½”





Martin Thorne
Tube Sponges
maple burl, copper leaf, rose thorns, acrylic paint
17" x 17" x 24"

Aquatic Vessel
yellow cedar, rose thorns, copper, acrylic paint
11" X 6"

Krisztina Egyed
Metamorphosis
sculpture: clay, copper,
iron, glass
22"





Maciek Walentowicz
Trust Darwin (details)
copper, patina, hardwood
24" x 28" x 3"



Shaping Moments

Panel Detail

4 – 18" x 18" colour canvas panels

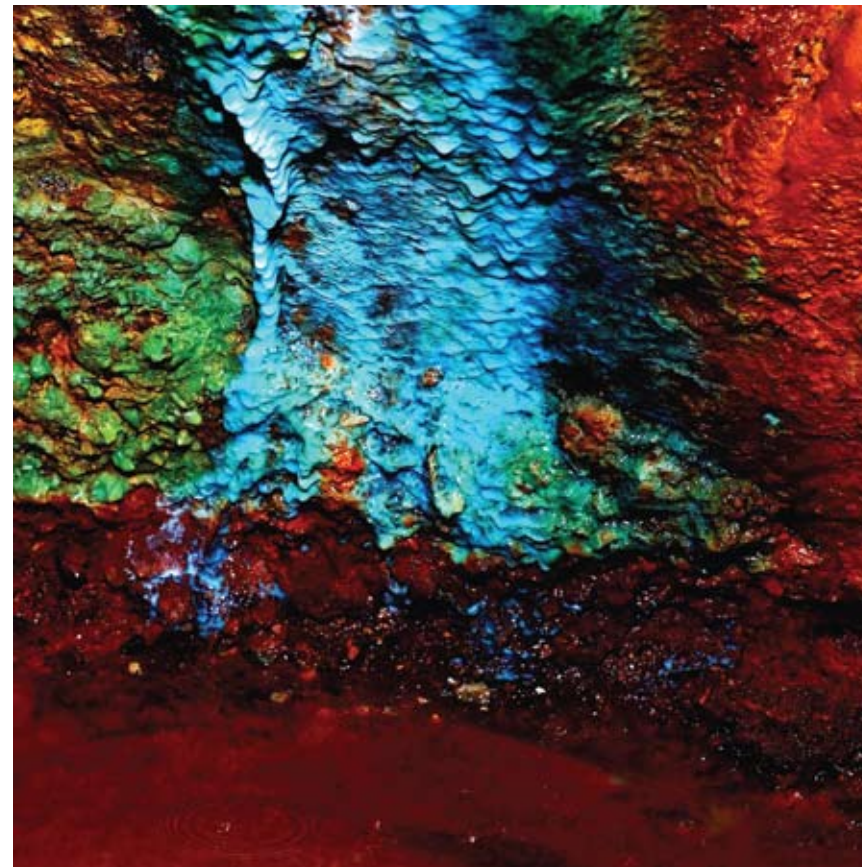
Solterra Development takes great pride in creating residences of exceptional design, solid construction, and quality finishing. Through its commitment to the arts and the community, Solterra has recently commissioned two public art works for their current developments — Eaglewind and Symphony Place.

The public art piece featured at Eaglewind — a master-planned community in the heart of Squamish, BC — is being designed by local BC artist Mike Tyler. This art piece will be conveniently located in the central piazza of Eaglewind for both residents and the public to enjoy. The design will incorporate a distinct water feature with various bronze sculptural elements showcasing the natural beauty of local British Columbian wildlife and will focus on the subject within an interactive environment.

At Symphony Place — Solterra's upcoming twin tower landmark development in downtown Vancouver, BC — a three-dimensional 120' long coloured glass wall will be incorporated into the base of the Vita building, located directly across from the Orpheum Theatre. Designed by internationally recognized glass artist Lutz Haufschild, and appropriately named 'Cadenza', this magnificent glass piece will embody the melodic rhythm of cadenzas in music as its striking vivacious colourings become backlit when cars move within the parkade behind it. This unique glass wall will provide a wonderful streetscape for local residents, Orpheum patrons, and the public.

Solterra Development recognizes the importance of supporting the arts and local Canadian artists and is proud to be a part of this year's Britannia Mining Exhibit.

Brian Noppe
Metamorphosis
photograph
30" x 20"

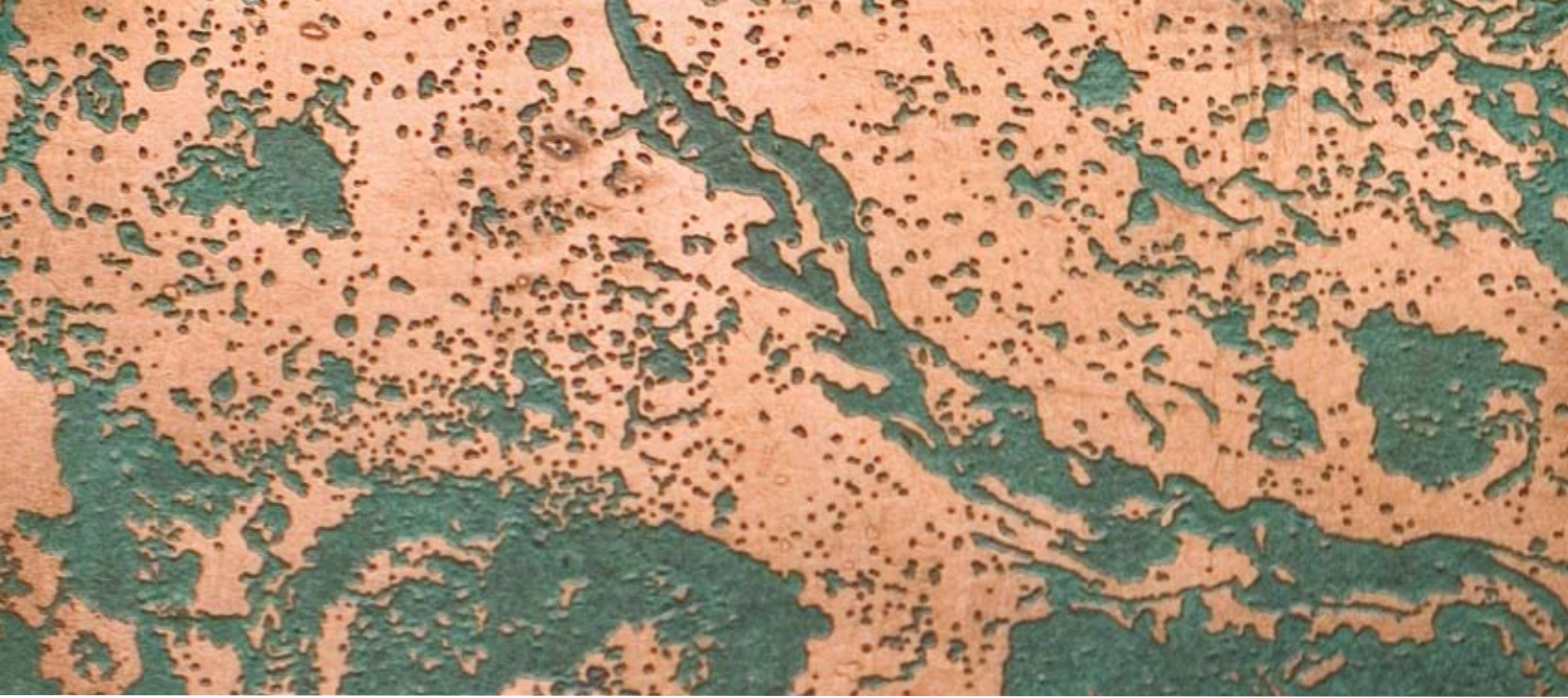




Gunter Wissmeyer
Earth and Fire
oil on canvas
36" x 48"

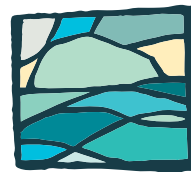


Bill McCollum
Xwalacktun Copper Shield
copper
3' high



Westmana is pleased to introduce MirEAU, an upcoming project on Squamish's beautiful waterfront. The planning and architecture of the development has been designed to reflect the industrial character and history of Squamish. A careful selection of natural materials has been integrated into the building design, including a variety of metals, cedar, glass, and concrete. Paying homage to the mining history of the area, the treatment of copper has been proposed for the external cladding and fascia. With its dynamic visual effect from the distinctive pink luster to orange incandescence and verdigris colours, the brilliant characteristics of this ever-changing metal also speak to the natural weathering and colour changes that continuously occur with the massive granite cliffs of The Chief—an unparalleled backdrop in this stunning location.

MirEAU represents a strong commitment to the collaborative redevelopment of the Peninsula waterfront, and as such, a public art creation will be dedicated to honour the spirit of the art community. The vision is a feature art piece that will speak to the industrial history of Squamish and capture the essence of "the evolution of mined product through art." As the development of MirEAU unfolds, an artist will be invited to collaborate with the design of the building to create a landmark for Squamish's waterfront.



Garry Broeckling
Cradle of Light
photograph
17" X 24"



Ramp up the Light
photograph
17" X 24"





Vincent Massey
Vase
highfire stoneware, iron kaki glaze

Stan Matwychuk
Linear Approach
mixed media installation
various sizes 10' to 19.5"



Zuza Bartekova
Necklace -Locket
silver, enamel,
polyurethane resin,
uv pigment
3½" x 1½" x 1"

Carol Ann Berkley
Mining Frenzy
sculpted apparel
fibre, metals
74" x 60"





Peter B. Legere
Art Door
wood, metal and glass
3'x6'8"



Our vision for "The Artisan" was to build a place that interacted with the community and the public. We view development as a public art. In building "The Artisan" we wanted to craft a building that would not only look beautiful and be a great place to live, but would also interact with the community around it.

We envisioned a place where people from around town and beyond would come, walk the street and enjoy art, where artists would actively work in the gallery space and people could stop, shop, meet and relax. We envisioned a place that would become part of the heart and soul of the community and we are working to realize our vision.

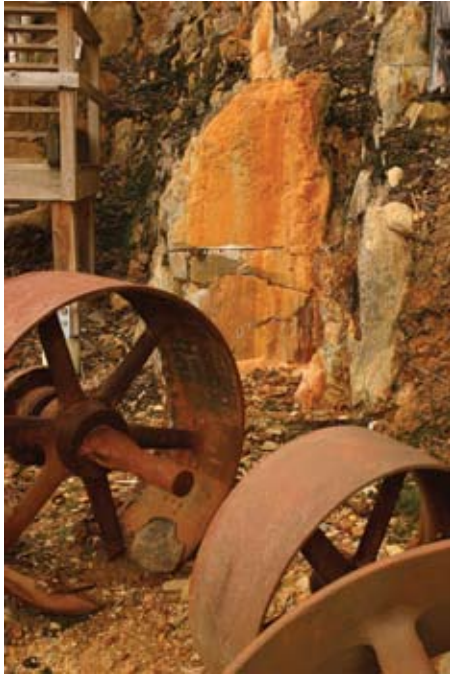
"The Artisan" consists of 57 upscale apartment condos and 8 townhomes located in the heart of downtown Squamish at 1336 Main Street. Our sales office is open onsite and the building is nearly complete with occupancy expected late this year. Developed by Talisman Homes, "The Artisan" has been inspired by the arts with a focus on craftsmanship and an attention to detail.

The front of "The Artisan" will feature two public gallery spaces that will be donated to the Squamish Arts Council. Together "The Artisan Gallery" will comprise over 80 linear feet of street-front window space facing the Squamish Library, on either side of the front entrance to the new building.

From the beginning we have recognized the importance of public art and in promoting the arts. We are very excited to be proceeding with the construction of "The Artisan Gallery" in partnership with the Squamish Arts Council as part of our commitment to developing and promoting the arts in the Sea-to-Sky corridor.

Talisman Homes and "The Artisan" is proud to support the Sea-to-Sky Arts Community and is proud to be part of this year's Britannia Art Exhibit.

For more information on "The Artisan" please find us on the web at www.theartisan.ca or call 604-399-7550.

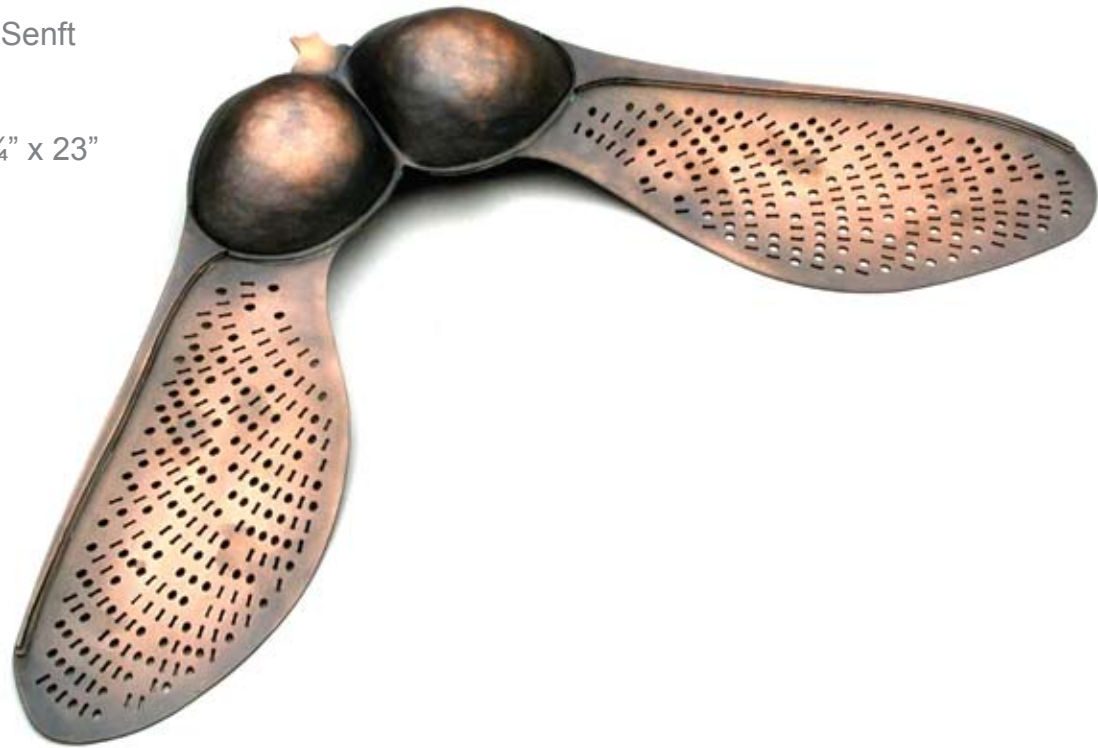


Joanna Schwarz
Copper Memories
photograph
24" x 16"



Greg Wint
The Fairground
photograph
32" x 40"

Douglas Senft
Samara
copper
3" x 10 3/4" x 23"



PARTICIPATING

Orly Ashkenazy
Suzanna Bartikova
Carol Ann Berkley
Jeannine Bradshaw
Garry Broekling
Krisztina Egyed
Lesley Ford
Scott Johnston
Floydd Joseph
Peter Legere
Marg Marlow
Vincent Massey
Stan Matwychuk
Joy McCullough
Brian Noppe
Marek Normon

Kal Opre
Virginia Reid
Susan Remnant
Oliver Roy
Joanna Schwarz
Douglas Senft
Jenny Smack
Solterra
The Artisan
Martin Thorne
Linda Wagner
Maciek Walentowicz
Westmana
Greg Wint
Gunter Wissmeyer
Xwalacktun

from top right: Scott Johnston, Jeannine Bradshaw,
Marg Marlow, Jenny Smack, Lesley Ford, Kal Opre.



Inspiring exploration of individual and societal connections to mining; its past, present and future.



BRITISH COLUMBIA ARTS COUNCIL

Squamish ~ Lillooet REGIONAL DISTRICT

